



Leggett & James

The Vale of Evesham Property Experts



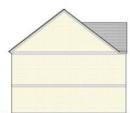
Cravens Yard Church Street

Evesham, Worcestershire, WR11 1DS

Asking Price £210,000



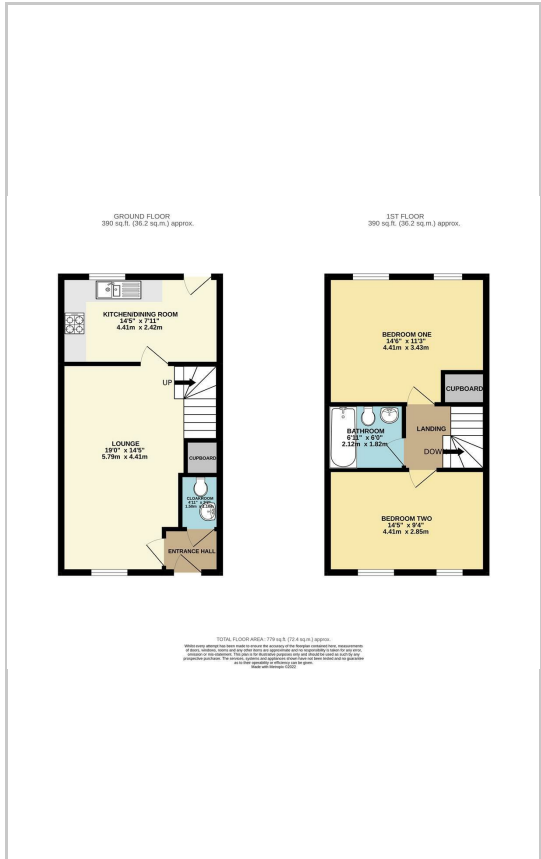
LIMITED PLOTS REMAINING This exciting new development from a local developer is being built in a prime location that is close to schools, shops, doctors and numerous other amenities. 'Cravens Yard' is a development of four properties that will be completed before the end of Summer. Get in touch with us on 01386 761241 or enquiries@leggettandjames.co.uk in order not to miss out.



Area Map



Floor Plans



Energy Efficiency Graph

Energy Efficiency Rating		Current	Potential
<p><i>Very energy efficient - lower running costs</i></p> <p>(92 plus) A</p> <p>(81-91) B</p> <p>(69-80) C</p> <p>(55-68) D</p> <p>(39-54) E</p> <p>(21-38) F</p> <p>(1-20) G</p>			
<p><i>Not energy efficient - higher running costs</i></p>			

England & Wales

EU Directive
2002/91/EC

These particulars, whilst believed to be accurate are set out as a general outline only for guidance and do not constitute any part of an offer or contract. Intending purchasers should not rely on them as statements of representation of fact, but must satisfy themselves by inspection or otherwise as to their accuracy. No person in this firm's employment has the authority to make or give any representation or warranty in respect of the property.